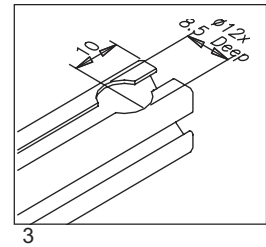
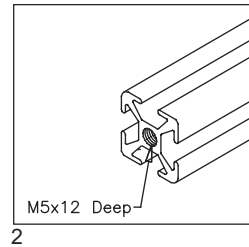
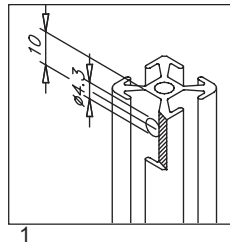
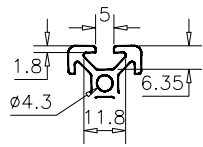
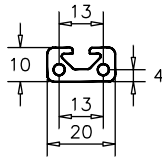


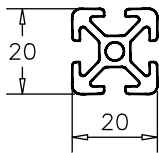
20 Series Profiles



12-120



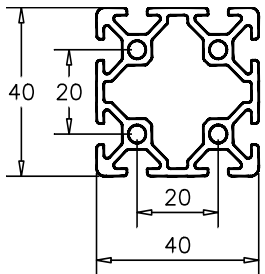
12-020



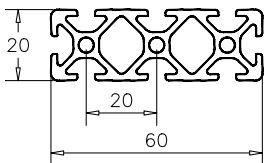
12-124



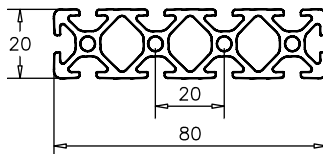
12-040



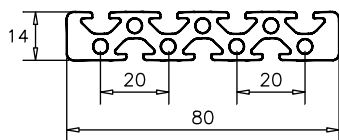
12-126



12-125



12-081



Application

20 series profiles can be used for light duty enclosures and miniature modeling. Also useful as an accessory extrusion where small profiles are needed. 5mm T-slot requires 20 series hardware.

- 1-2 Servicing for Std. Fastener 20 (20-021)
- 3 Servicing for Univ. Fastener 20 (20-040)



Technical Data
Al, clear anodized

Part #	I _x [cm ⁴]	I _y [cm ⁴]	W _x [cm ³]	W _y [cm ³]	Section [cm ²]	Weight [kg/m]
12-120	0.12	0.53	0.24	0.53	1.29	0.35
12-020	0.72	0.72	0.72	0.72	1.85	0.52
12-124	1.27	5.01	1.27	2.50	3.18	0.86
12-040	8.55	8.55	4.27	4.27	4.90	1.32
12-126	2.04	16.02	2.04	5.34	4.73	1.28
12-125	2.70	36.40	2.70	9.10	6.19	1.67
12-081	1.14	41.01	1.57	10.25	6.65	1.80

Description	Unit	Part #
Profile 20x10	cut off max. 3M	12-120
	pkg of 32 at 3M ea.	12-120-3
Profile 20x20	cut off max. 3M	12-020
	pkg of 32 at 3M ea.	12-020-3
Profile 20x40	cut off max. 3M	12-124
	pkg of 16 at 3M ea.	12-124-3
Profile 40x40, 20 Series	cut off max. 3M	12-040
	pkg of 8 at 3M ea.	12-040-3
Profile 20x60	cut off max. 3M	12-126
Profile 20x80	cut off max. 3M	12-125
Profile 80x14	cut off max. 3M	12-081
Saw cut necessary for cut to length		19-001
End Cap 20x10	1 pc	18-830
End Cap 20x20	1 pc	18-802
End Cap 20x40	1 pc	18-831
End Cap 40x40, 20 Series	1 pc	18-832
End Cap 20x60	1 pc	18-834
End Cap 20x80	1 pc	18-835
End Cap 80x14	1 pc	18-833