

Steeplechase VLC SSG995 Starting Gate Package V4.2 an V5.1 Available

Steeplechase VLC Standard Edition PC Control software includes:
VLC 256-tag parallel hard key, development and run time package, all I/O drivers and manuals. VLC offers flowchart, and relay ladder logic programming plus a built-in HMI.

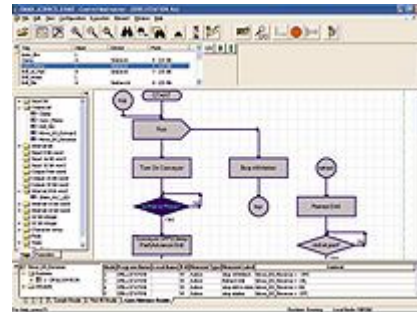


Entity Visual Logic Controller (VLC) is the fastest control software for manufacturing applications. VLC's high-performance runtime can achieve logic scan times as short as 200 microseconds. VLC uses intuitive flowchart programming and includes integrated diagnostics capabilities. Like all Entity control software products - control logic, motion, and HMI (via connection to CiTect's HMI) are combined on one PC with a single tagname database. VLC supports a variety of the most commonly used I/O families and device networks.

Steeplechase VLC - Features

Reduce Project Costs

- Direct Tagname Editor
- 63 character tagnames, 1024 character descriptions
- Drag-and-Drop support
- Cut-Copy-Paste support
- Libraries and templates support through subprograms
- Grid, snap-to, and auto-alignment of logic blocks
- User-defined preferences
- Floating, dockable toolbars
- Built-in version control for projects
- Single tag database with motion and HMI functions
- Autolaunch of VLC, HMI, and Windows® programs



Proven Runtime Performance:

- Scan-based architecture with repeatable performance
- User-selectable scan rate
- FAST execution with scan rates as low as 200 microseconds
- Automatic watchdog timer

Simultaneous Programming Languages

- Flowcharting

- Action block, including discrete and analog functions
- Decision block, including discrete and analog functions
- Branch/Merge block
- Exception blocks (begin and end)
- Start and Stop blocks
- Subroutine/Subprogram call, including parameters passed by reference, value, and as read-only
- Diagnostic Decision Wizard
- Special Function block for I/O, Diagnostics, Motion Control, PID, etc.
- Comment blocks

- IEC 1131-1 based relay ladder logic

- IEC 1131-3-based, flowchart enhanced
- Contacts – NO, NC, Rising Edge, Falling Edge
- Coils – Output, Inverted, Latch, Unlatch
- Branch capability
- Counter block
- Timer On Delay, Timer Off Delay, and Retentive Timers
- Action Elements – includes discrete and analog functions
- Decision Elements – includes discrete and analog functions
- Special Function for I/O, Diagnostics, Motion Control and PID

- Flowchart enhanced relay ladder logic (patented).

Built-in HMI

- Windows®-based tools for building easy-to-understand operator screens
- Upgrade path for full SCADA functionality
- Single tag database to create tags just once to access and edit multiple programs
- 255 colors in palette
- International language capability
- VGA, SVGA, XGA, SXGA resolutions supported

Connectivity

- Allen-Bradley Data Highway Plus
- Allen-Bradley Remote I/O
- Arcnet
- Control Rocket Port (ISA PCI, 4, 8, 16, 32 ports)
- Data Express interface to VLC runtime data (Legacy-Use OPC for new solutions)
- DataLogic
- DeviceNet (Synergetic/Hilscher, CIF-30, CIF-50, CIF-100, CIF-104)
- DeviceNet (SST 5136-DN/DNP RIO)
- Generic I/O
- Generic I/O for PCI cards only
- GE-Fanuc Genius
- Honeywell SDS Soft RIO
- Interbus-S (Phoenix Contact, Logical Mode)
- Koyo EBC driver
- MEI 6.53 5/4/01
- Modbus/TCP I/O
- Modicon Remote I/O (800 Series)
- MTL 95 I/O
- Network Express
- Opto 22 Optomux
- Opto 22 Pamux
- PID Loop Control (floating point)
- ProfiBus (Synergetic/Hilscher CIF-30, CIF-50, CIF-100, CIF-104)
- ProfiBus (SST)
- ProfiBus (Siemens CP 5613/14)
- Retentive Memory
- RS232/RS242 Full Duplex Serial Port
- Square D Seriplex SPLX RIO
- Mitsubishi ABF
- Mitsubishi CClink
- Mitsubishi Melsecnet 10
- Mitsubishi Melsecnet 10 Cyclic



Other Notable Features

- **Logical Command Functions**
+, ++, <, >, <<, >>, <=, >=, NOT, AND, OR, XOR, MOD, ON, OFF, TRUE, FALSE, COMMENT, <>, +, -, /, bit, set, bit pick, bit rotate.
- **Math Functions**
38 total including Trigonometric, Hyperbolic, Exponentiation, Array Processing, and Conversion Functions: natural log, base 10 log, Sin, Cos, Tan, Arcsin, Arccos, Arctan, Sinh, Cosh, Tanh, square root, minimum, maximum, average, absolute, random, SetType, MakeWord
- **String Functions**
Compare, left, right, mid, set, case, no case
- **Berkley Sockets**
Berkley Sockets over TCP/IP in real-time send and receive TCP/IP packets using the sockets interface directly from flowchart or RLL programs.
- **Runtime Monitoring and Debugging Features**
 - Watch Window
 - Instant Watch Window – displays commands, instant tag values, and I/O addresses
 - DataTips
 - Execution Trails – current and historical
 - Remote and RAS programming
 - Online cross referencing
 - Online programming for flowcharts and relay ladder logic
 - Force, Set, Toggle, Clear
 - Password-protected flowcharts